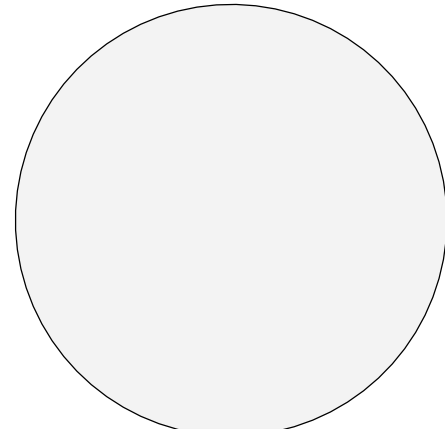


ELEVATION LEGEND

- 1 WHITE SMOOTH FINISH STUCCO PAINTED (SW-7005 PURE WHITE SHERWIN-WILLIAMS)
- 2 ANODIZED ALUMINUM ROOFTOP LOUVERED SCREEN
- 3 VIRACON VLE1-47 LAMINATED GLASS FOR STOREFRONTS / WINDOWS / BALCONY DOORS
- 4 FRAMELESS CLEAR GLASS RAILING SYSTEM (42 IN. MIN.)
- 5 GREEN WALL STAINLESS STEEL CABLE TRELLIS SYSTEM
- 6 ALUMINUM TRELLIS STSTEM / PERGOLA (ANODIZED ALUMINUM COLOR)
- 7 42" H. CABLE CRASH WALL (HORIZONTAL WIRES) SHOP DRAWINGS TO BE APPROVED PRIOR TO INSTALLATION



1 SMOOTH STUCCO FINISH



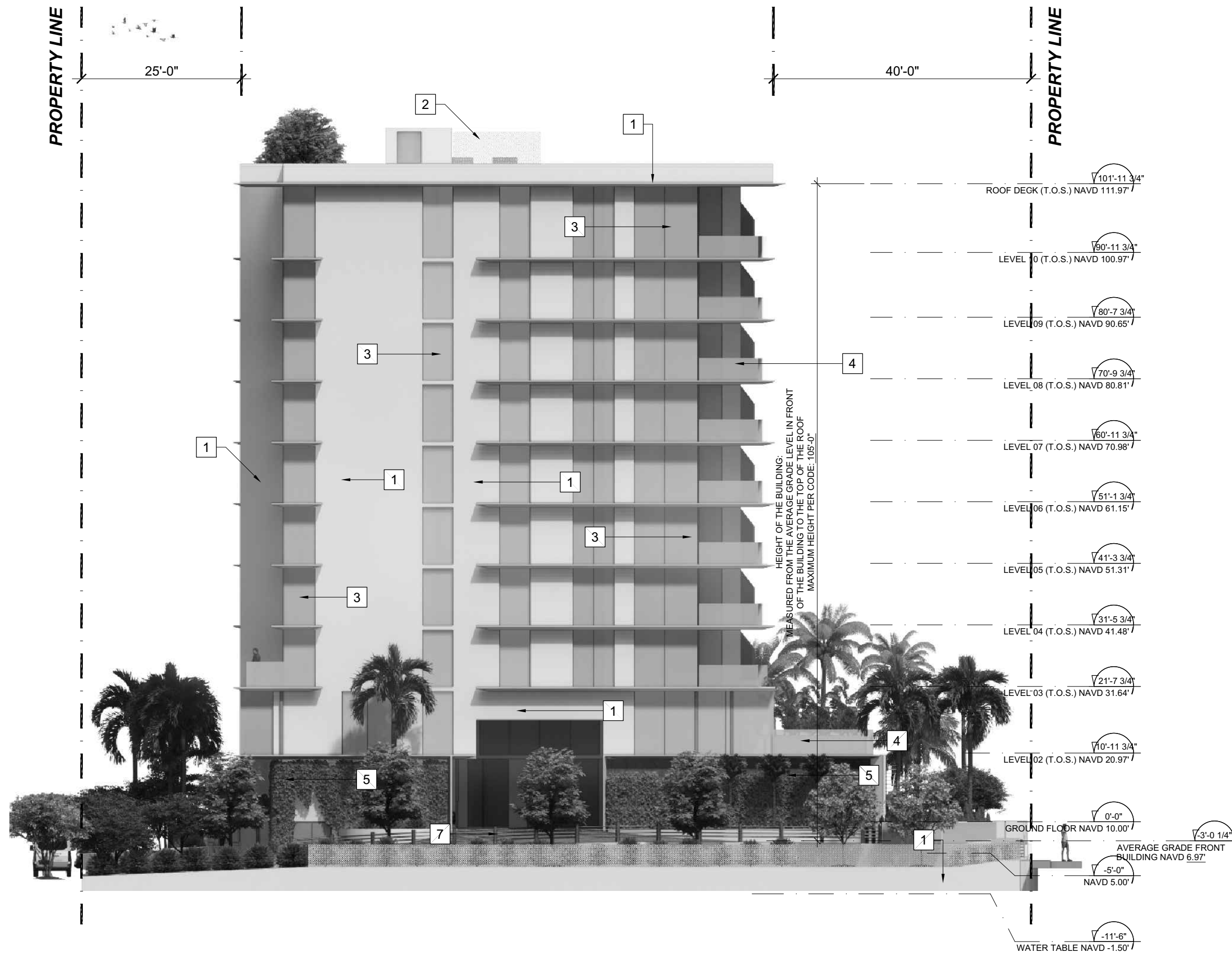
SW-7005 PURE WHITE SHERWIN-WILLIAMS / OR EQUIVALENT APPROVED BY ARCHITECT



2 MECHANICAL EQUIPMENT ROOFTOP LOUVERED ALUMINUM SCREENS



3 VIRACON VLE1-47 LAMINATED GLASS



1A SIDE ELEVATION (NORTH) - BEFORE
A-503 SCALE: 1/16" = 1'-0"



1B SIDE ELEVATION (NORTH) - AFTER
A-503 SCALE: 1/16" = 1'-0"



4 FRAMELESS CLEAR GLASS RAILING SYSTEM



5 GREEN WALL STAINLESS STEEL CABLE TRELLIS SYSTEM



6 ALUMINUM TRELLIS STSTEM / PERGOLA (ANODIZED ALUMINUM COLOR)



7 42" H. CABLE CRASH WALL (HORIZONTAL WIRE SHOP DRAWINGS TO BE APPROVED PRIOR TO INSTALLATION)



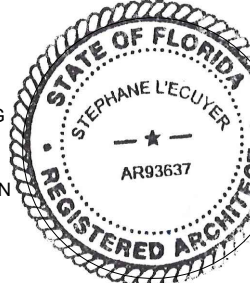
3323 NE 163RD STREET, SUITE 200
NORTH MIAMI BEACH, FL 33180
Tel.: (305) 792-0015
Fax: (305) 931-0279
WWW.ABSOLUTE-IDEA.COM

idea 2022
ALL RIGHTS RESERVED

SEAL

TO THE BEST OF MY KNOWLEDGE, THE PLANS AND SPECIFICATIONS COMPLY WITH THE APPLICABLE MINIMUM BUILDING CODES AND THE APPLICABLE FIRE-SAFETY STANDARDS AS DETERMINED BY THE LOCAL AUTHORITY IN ACCORDANCE WITH THIS SECTION AND 633 FLORIDA STATUTES.

STEPHANIE L'ECUYER
AR 63627



PROFESSIONALS

THOMAS
ENGINEERING GROUP



BLISS & NYITRAY, INC.
STRUCTURAL ENGINEERS

REV.	DATE	DESCRIPTION	Prep. By	Verified By
01	05-06-2024	AAC PRESENTATION - REV 01	ABY	JFG

ALL MEASUREMENTS MUST BE VERIFIED BEFORE BEGINNING THE WORKS. NO MEASUREMENTS ARE TO BE TAKEN DIRECTLY FROM THIS DRAWING.

Notes

ARCHITECTURAL
APPEARANCE
COMMITTEE (AAC)

Client

CAMACO
COMACO DEVELOPMENT LLC
839 RUE ST-JOSEPH EST
QUEBEC QC CANADA G1K 3C8

Client reference number

Project

ENTOURAGE IN THE SUN
407 / 409 N RIVERSIDE
POMPANO BEACH FL 33062

Title

NORTH ELEVATION
(SIDE)

Drawn BY / MAL
Verified JFG
Approved SL

Field ARCHITECTURE
Scale AS SHOWN
Date 05-26-2023

Project no. 22-36015

Project A-503

07/02/2024